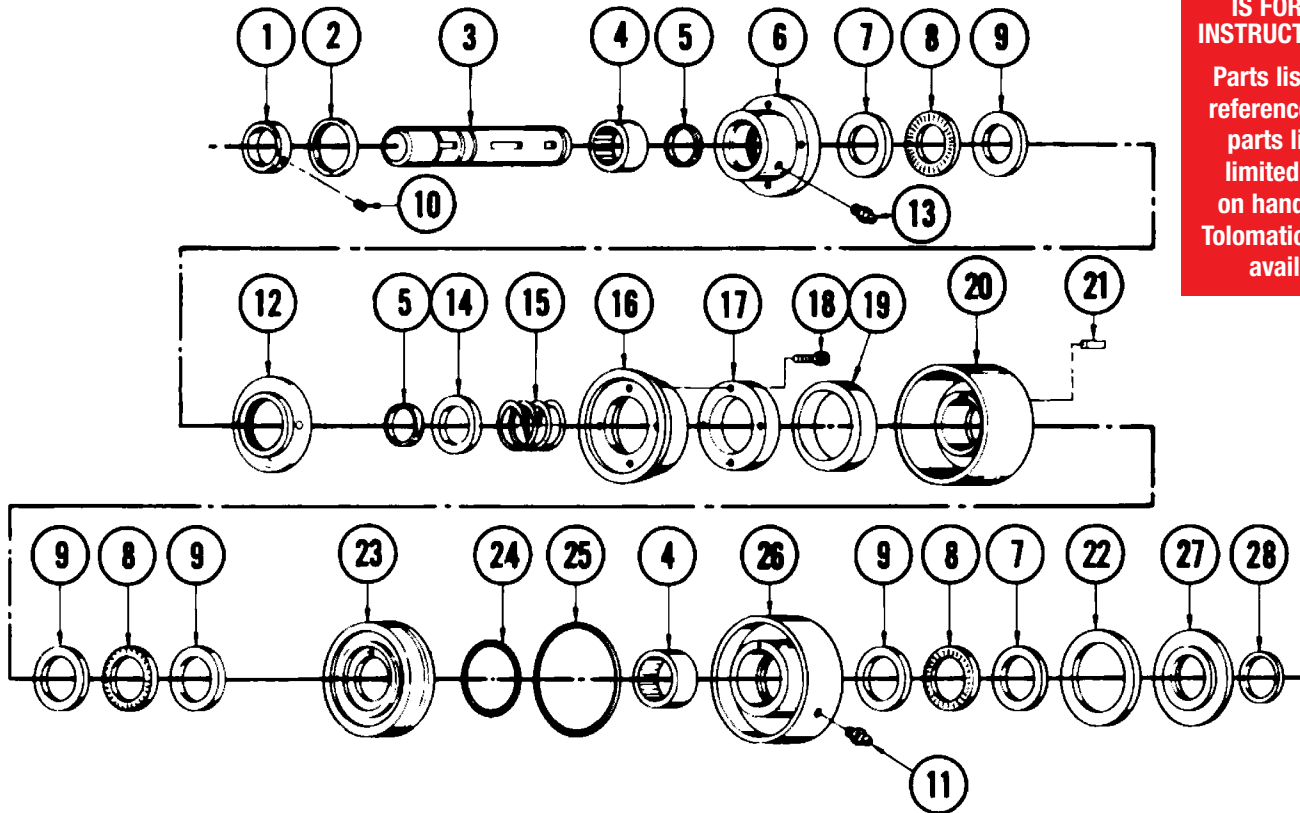


Disc/Cone Clutch

1307D

(02/01/2026)
DISCONTINUED
PRODUCT STYLE OR
SIZE. PARTS SHEET
IS FOR REPAIR
INSTRUCTIONS ONLY.

Parts listing is for
reference only. All
parts listed are
limited to stock
on hand. Contact
Tolomatic regarding
availability.



ITEM	PART NO.	DESCRIPTION	1307-0308	1307-031
1.	1307-1008	COLLAR, SHAFT		1
2.	1207-1016	RING, RETAINING	1	1
3.	1207-1018	SHAFT, 1/2" BORE	1	
	1207-1019	SHAFT, 5/8" BORE		1
4.	1307-1015	BEARING, ROLLER	2	2
5.	1307-1013	RING, RETAINING	2	2
6.	1207-1012	ADAPTER	1	1
7.	1307-1009	RACE, BEARING	2	2
8.	0200-1214	BEARING, THRUST	3	3
9.	1307-2009	RACE, BEARING	4	4
10.	1301-1174	SCREW, SET	2	2
11.	0100-1601	GREASE FITTING	1	1
12.	1207-1002	ADAPTER, CONE	1	1
13.	1208-1034	GREASE FITTING	1	1
14.	1207-1008	WASHER	1	1

ITEM	PART NO.	DESCRIPTION	1307-0308	1307-031
15.	1207-1033	SPRING	1	1
16.	1207-1003	CONE	1	1
17.	1207-1009	ADAPTER, RING	1	1
18.	1307-2018	SCREW, SOC. HD. CAP.	4	4
19.	1207-1011	SEAL, FELT	2	2
20.	1307-2028	CUP	1	1
21.	1300-1012	KEY	1	1
22.	1207-1010	SEAL, FELT	1	1
23.	1207-1005	PISTON	1	1
24.	0720-1004	SEAL, O-RING	1	1
25.	1207-1014	SEAL, O-RING	1	1
26.	1207-1006	CYLINDER	1	1
27.	1207-1007	ADAPTER, SEAL	1	1
28.	1207-1060	RING, RETAINING	2	2

Installation and Maintenance Instructions

The Tolomatic Disc/Cone Clutch is as simple to install as a sprocket or sheave.

Simply slip the clutch over the shaft to the desired position, align with keyway and insert key. After final alignment with mating sprocket or sheave, tighten set screws to lock clutch in place.

Connect air or hydraulic source (not over 100 psi pressure) to cylinder port. Make sure no side or end thrust is transmitted to clutch. Flexible hose (**not plastic tubing**) may be used. A restraining member may be necessary to prevent cylinder rotation.

Lubrication will be required after every 4 weeks of operation. Use a lubricant such as ORE-LUBE G-1/3.* Two zerk fittings are provided for this purpose.

After long periods of operation, it may be necessary to disassemble the clutch for cleaning and inspection.

CAUTION: CLUTCHES ARE UNDER SPRING TENSION. USE CARE WHEN DISASSEMBLING.

To disassemble, remove the retaining rings from the cylinder end of the clutch shaft and slide all parts off this end. Assemble all parts onto the shaft from the opposite end. This procedure is necessary to keep from damaging the edges of the bearing seal lips. See exploded view on the other side for proper sequence of assembly.

Wipe off all old lubricant before applying fresh grease. Use Ore-Lube* G-1/3 or similar. If it is necessary to remove the piston from the cylinder, re-lubricate the O-rings with a mineral base O-ring grease.

Remove any grease that may have contacted the cone and clean out any foreign material in the cup. Be careful not to re-contaminate any internal parts.

If these simple procedures are followed, your Tolomatic Disc/Cone Clutch will give you years of trouble-free service.

ORE-Lube is a trademark of ORE-Lube Corp., <https://www.orelube.com>

**(02/01/2026) DISCONTINUED PRODUCT
STYLE OR SIZE. PARTS SHEET IS FOR
REPAIR INSTRUCTIONS ONLY.**

**Parts listing is for reference only. All
parts listed are limited to stock on hand.
Contact Tolomatic regarding availability.**

TolomaticTM
EXCELLENCE IN MOTION

3800 County Road 116, Hamel, MN 55340 USA
<http://www.tolomatic.com> • Email: Help@Tolomatic.com
Phone: (763) 478-8000 • Toll Free: 1-800-328-2174

COMPANY WITH
QUALITY SYSTEM
CERTIFIED BY DNV
= ISO 9001 =

All brand and product names are trademarks or registered trademarks of their respective owners. Information in this document is believed accurate at time of printing. However, Tolomatic assumes no responsibility for its use or for any errors that may appear in this document. Tolomatic reserves the right to change the design or operation of the equipment described herein and any associated motion products without notice. Information in this document is subject to change without notice.